

INSTALLATION DETAILS (RECOMMENDATIONS ONLY)

CONCRETE FOOTING, 25MPA:

2 QTY AT 450 X 300 X 300mm MINIMUM FOOTING SIZE

- BOLT DOWN TO FOOTINGS WITH 4X M12X75MM DYNABOLTS OR SIMILAR

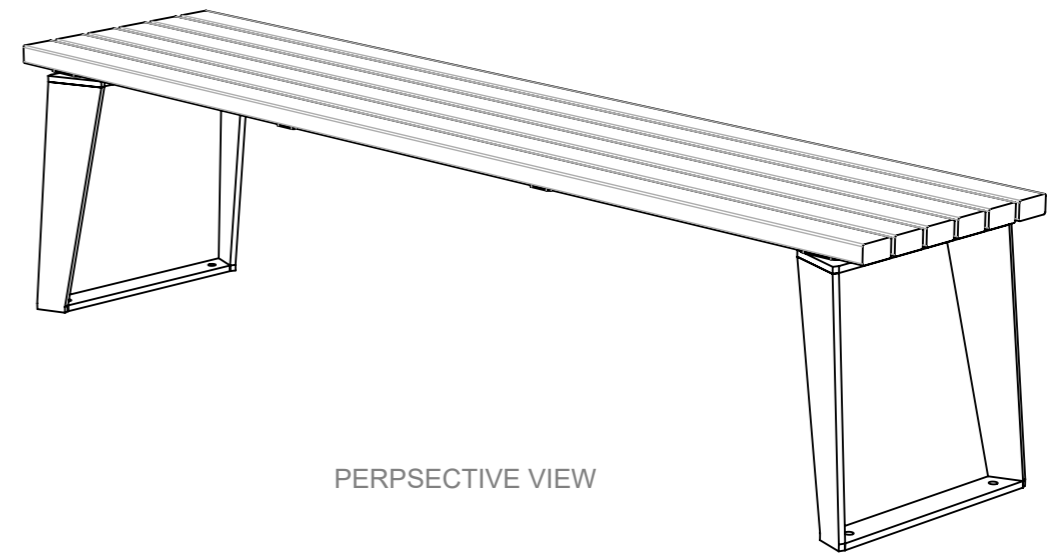
- FOR EXTENDED LEG SET LEG INTO FOOTINGS

OR

1 QTY CONCRETE SLAB 2000 X 850 X 100mm

- BOLT DOWN TO FOOTINGS WITH 4X M12X75MM DYNABOLTS OR SIMILAR

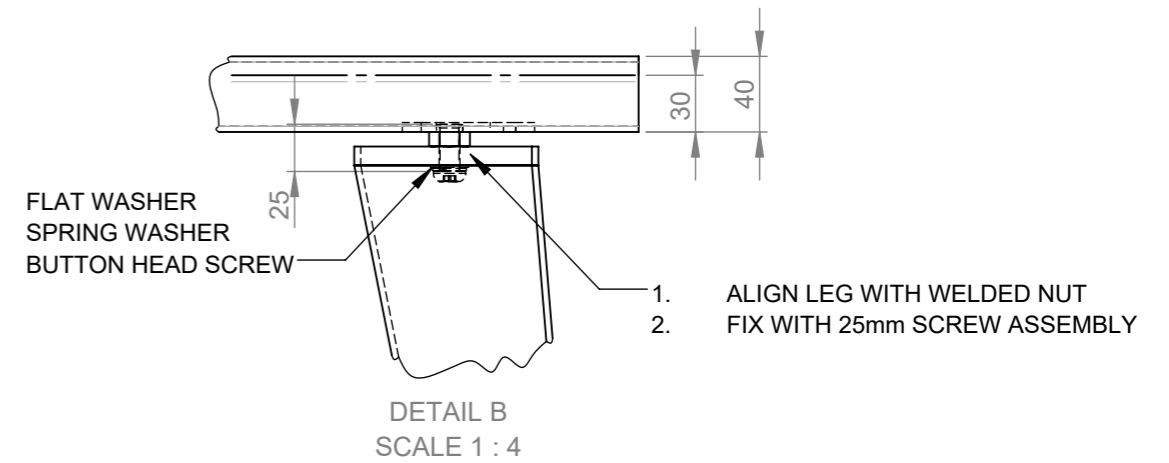
FURNITURE MAY ARRIVE FLAT PACKED
TO ASSIST DELIEVRY CHARGES



PERPSECTIVE VIEW

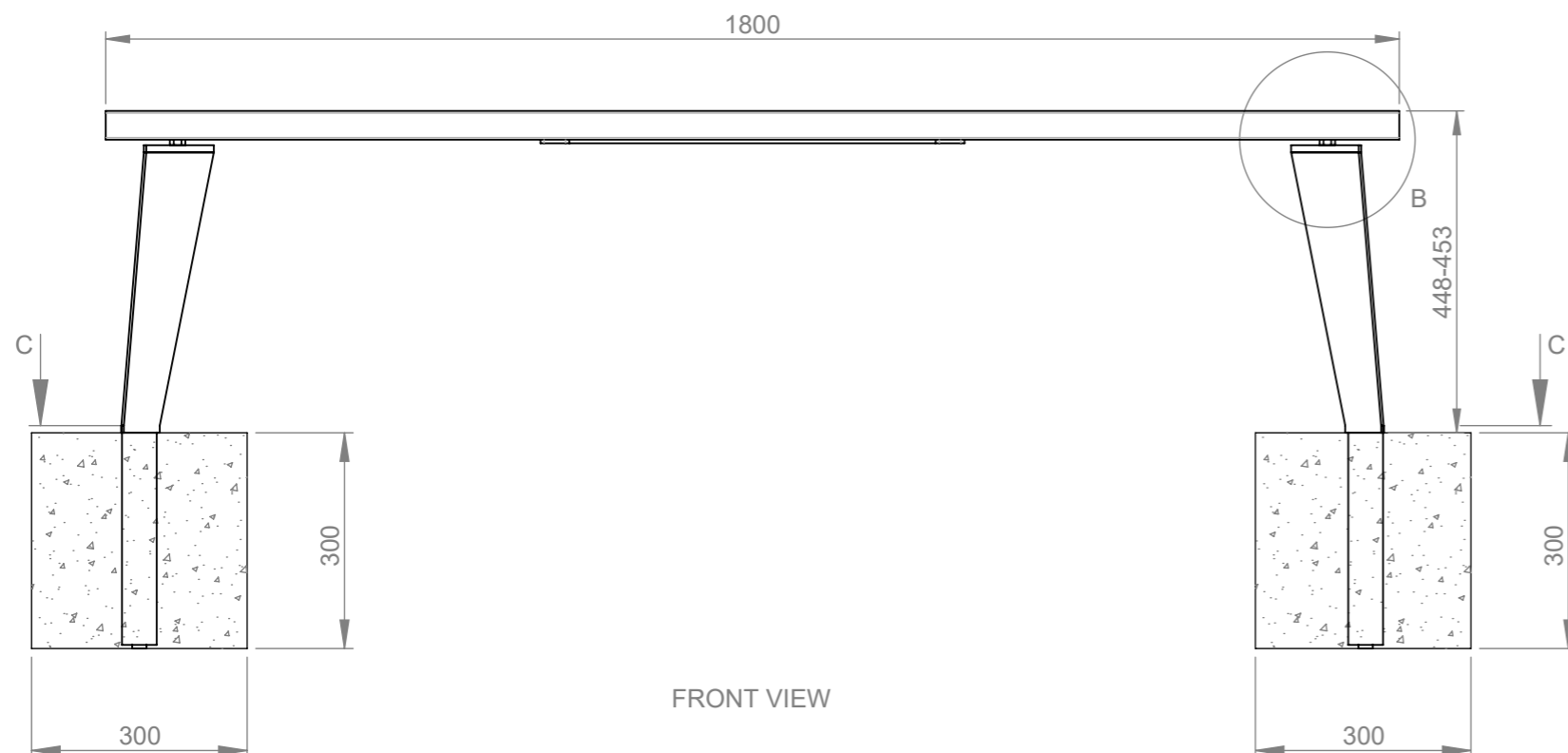


SECTION C-C

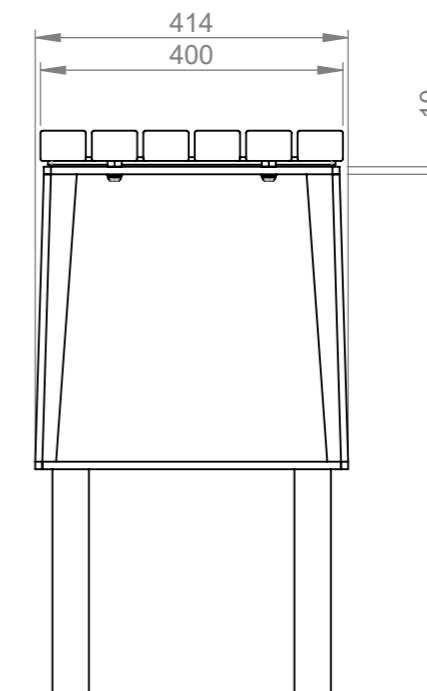


DETAIL B
SCALE 1 : 4

1. ALIGN LEG WITH WELDED NUT
2. FIX WITH 25mm SCREW ASSEMBLY



FRONT VIEW



RIGHT VIEW



Commercial Systems Australia Pty. Ltd.

42 Orchard Street, Kilsyth South, VIC
phone: (03) 9723 4111
fax: (03) 9723 3494
email: design@commercialsystems.com.au

Model Code: TM4721
Model Description: Verge Bench

Drawing: CS6235
Sheet Number: 11
Sheet Description: Install Drawing

Drawn By: M.Shevchuk
Date Drawn: 5/06/2019
Revision Number: 0
Revision Details: -
SCALE 1:10

ALL DIMENSIONS IN MILLIMETERS
UNLESS OTHERWISE STATED
ALL PARTS CENTRED UNLESS SPECIFIED

TOLERANCES	
X	+/- 1mm
X.X	+/- 0.5mm
X.XX	+/- 0.05mm