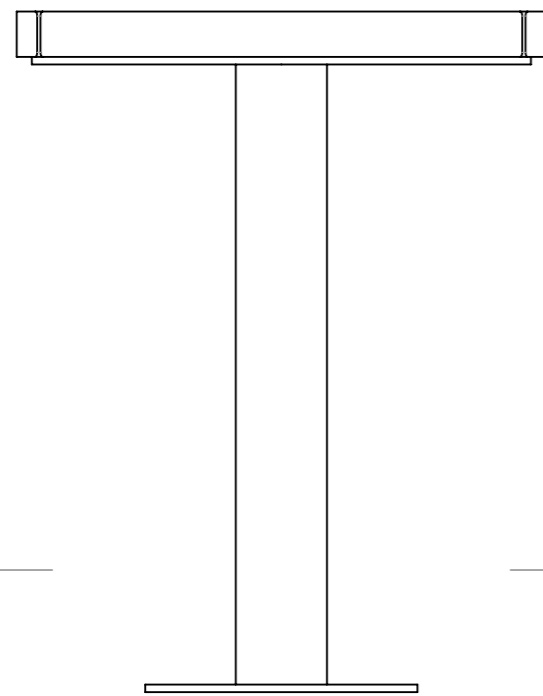
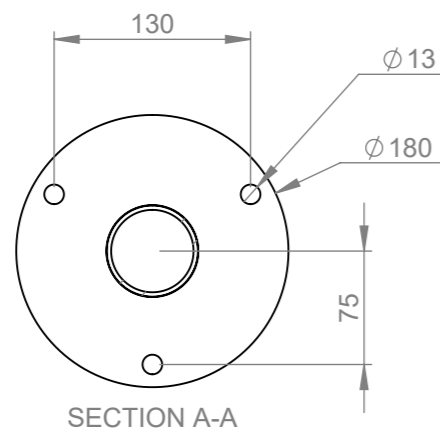


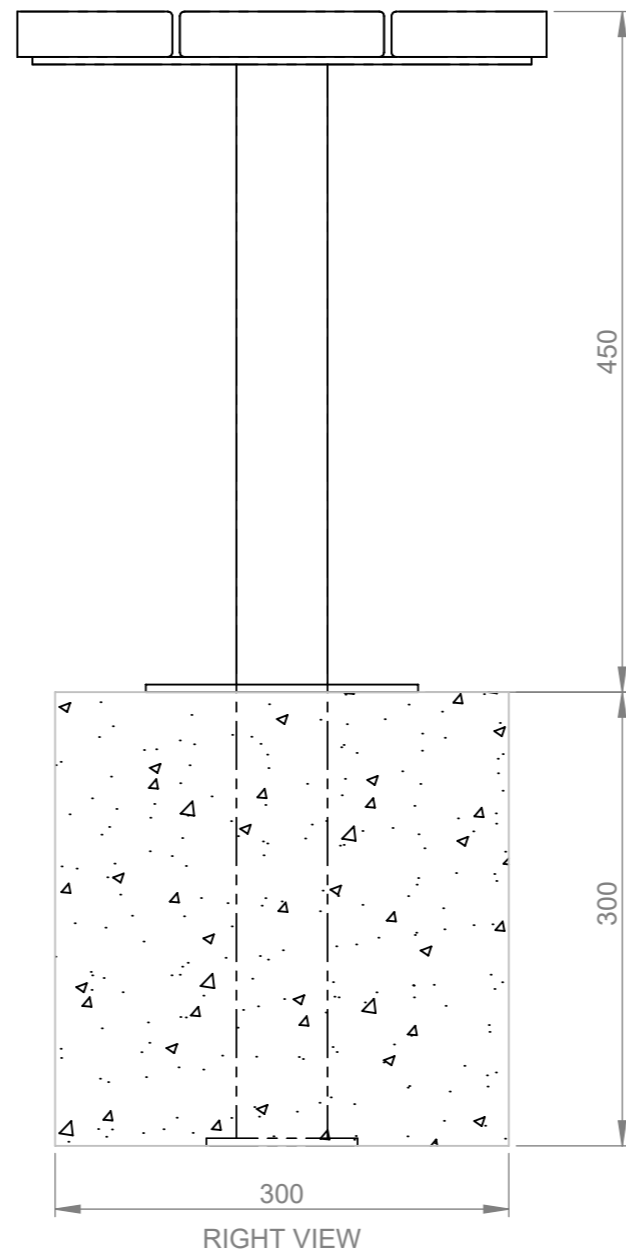
TOP VIEW



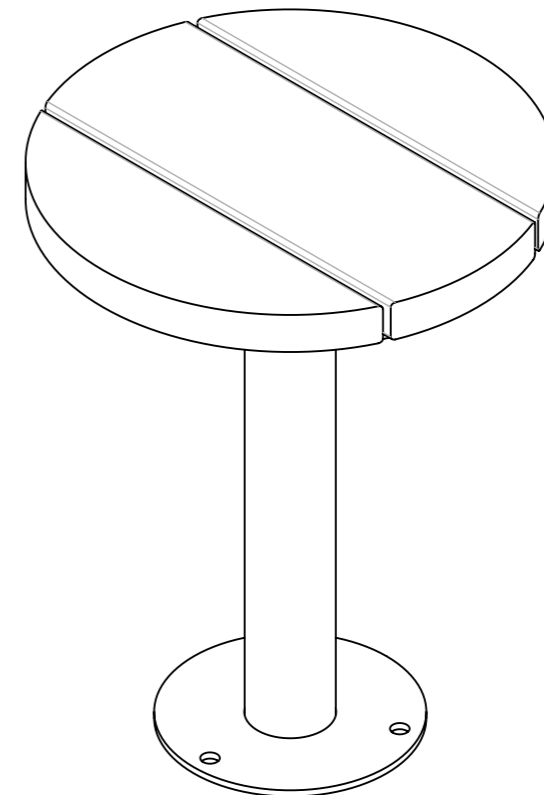
FRONT VIEW



SECTION A-A



RIGHT VIEW



ISOMETRIC VIEW

**INSTALLATION DETAILS (RECOMMENDATIONS ONLY)**

CONCRETE FOOTING, 25MPA:

- 1 QTY AT 300 X 300 X 300mm MINIMUM FOOTING SIZE
- BOLT DOWN TO FOOTINGS WITH 3 QTY 12mm X 75mm DYNABOLTS OR SIMILAR
- FOR EXTENDED LEG SET LEG INTO FOOTINGS

OR

- 1 QTY CONCRETE SLAB 150mm THICK
- BOLT DOWN TO FOOTINGS WITH 3 QTY 12mm X 75mm DYNABOLTS OR SIMILAR



Commercial Systems Australia Pty. Ltd.

42 Orchard Street, Kilsyth South, VIC  
 phone: (03) 9723 4111  
 fax: (03) 9723 3494  
 email: design@commercialsystems.com.au

Model Code: TM4711  
 Model Description: Circular Stool. 135x30mm

**Drawing: CS7627**

Sheet Number: 9  
 Sheet Description: Install

Drawn By: M.Shevchuk  
 Date Drawn: 31/08/2021  
 Revision Number: 1

SCALE 1:5

ALL DIMENSIONS IN MILLIMETERS  
 UNLESS OTHERWISE STATED  
 ALL PARTS CENTRED UNLESS SPECIFIED

**TOLERANCES**

X	+/- 1mm
X.X	+/- 0.5mm
X.XX	+/- 0.05mm