

**INSTALLATION DETAILS (RECOMMENDATIONS ONLY)**

CONCRETE FOOTING, 25MPA:

2 QTY AT 300L X 300W X 320DMM MINIMUM FOOTING SIZE

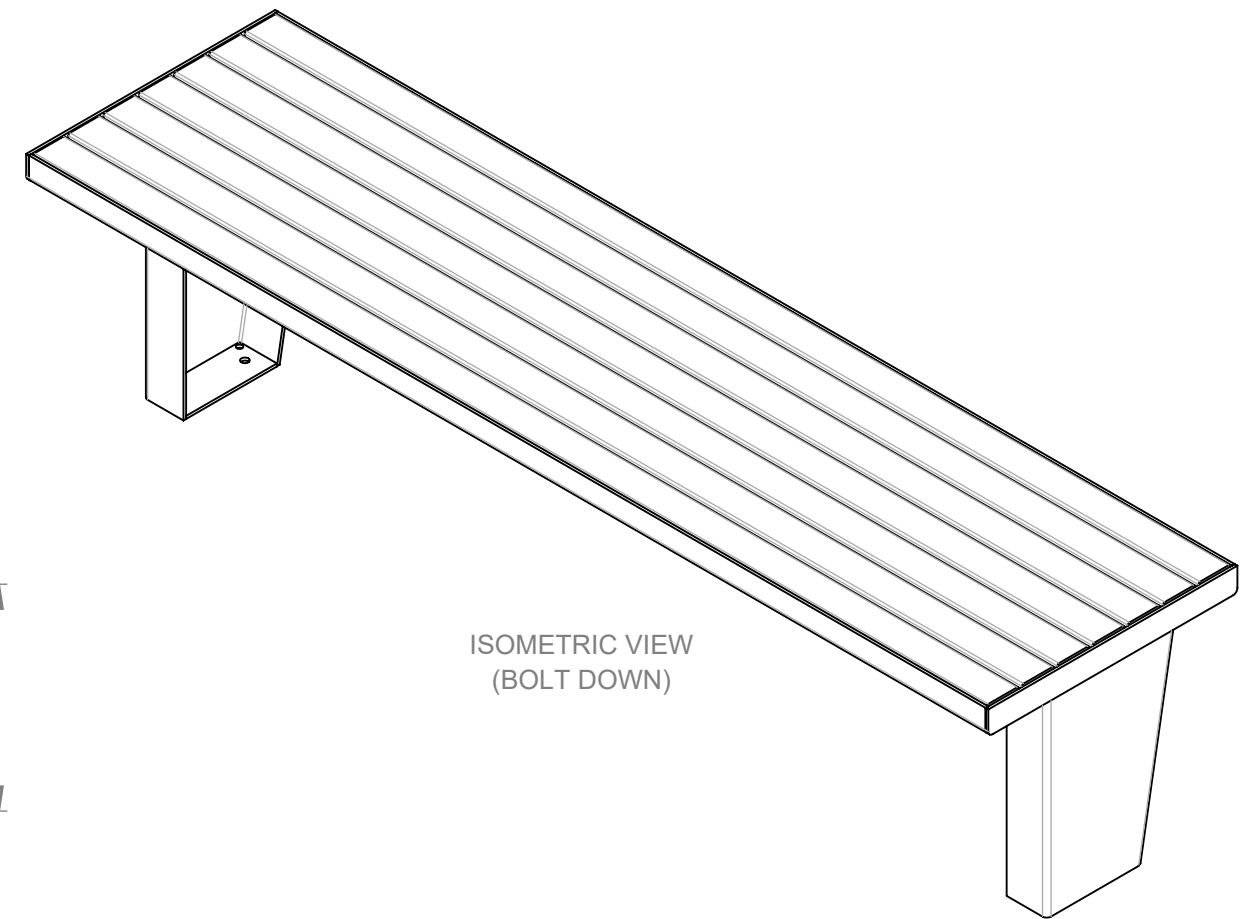
- BOLT DOWN TO FOOTINGS WITH 4X M12X75MM DYNABOLTS OR SIMILAR

- FOR EXTENDED LEG SET LEG INTO FOOTINGS

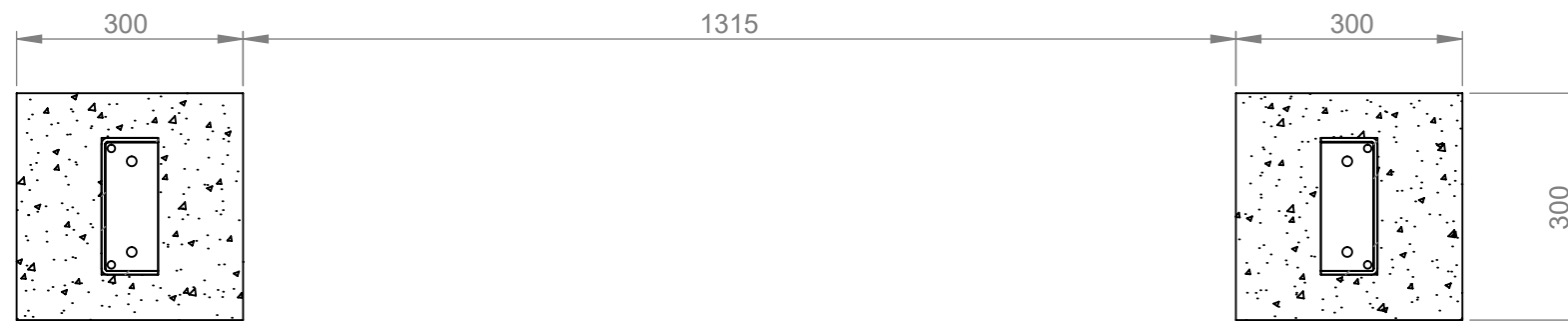
OR

1 QTY CONCRETE SLAB 100mm THICK

- BOLT DOWN TO FOOTINGS WITH 4X M12X75MM DYNABOLTS OR SIMILAR



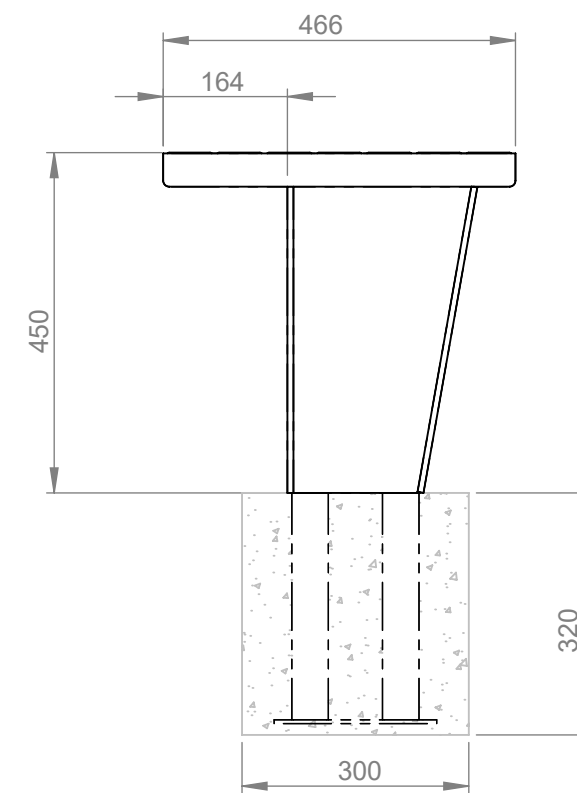
ISOMETRIC VIEW  
(BOLT DOWN)



SECTION C-C



FRONT VIEW



END VIEW



Commercial Systems Australia Pty. Ltd.

42 Orchard Street, Kilsyth South, VIC

phone: (03) 9723 4111

fax: (03) 9723 3494

email: design@commercialsystems.com.au

Model Code: TM4701

Model Description: Lisboa Bench

**Drawing: CS5835**

Sheet Number: 9

Sheet Description: Install Drawing

Drawn By: GS

Date Drawn: 16/05/2019

Revision Number: 1 GS01.02.21

Revision Details: Batten Updated

SCALE 1:10

ALL DIMENSIONS IN MILLIMETERS  
UNLESS OTHERWISE STATED  
ALL PARTS CENTRED UNLESS SPECIFIED

TOLERANCES

X +/- 1mm

X.X +/- 0.5mm

X.XX +/- 0.05mm