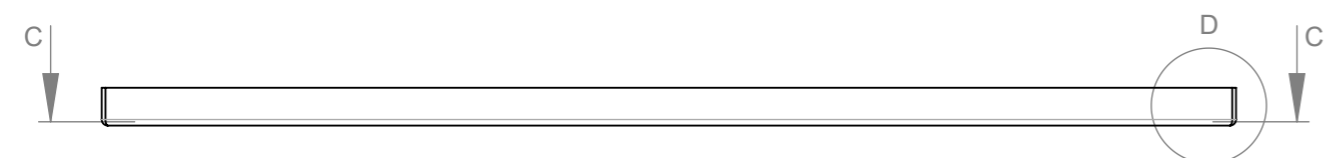
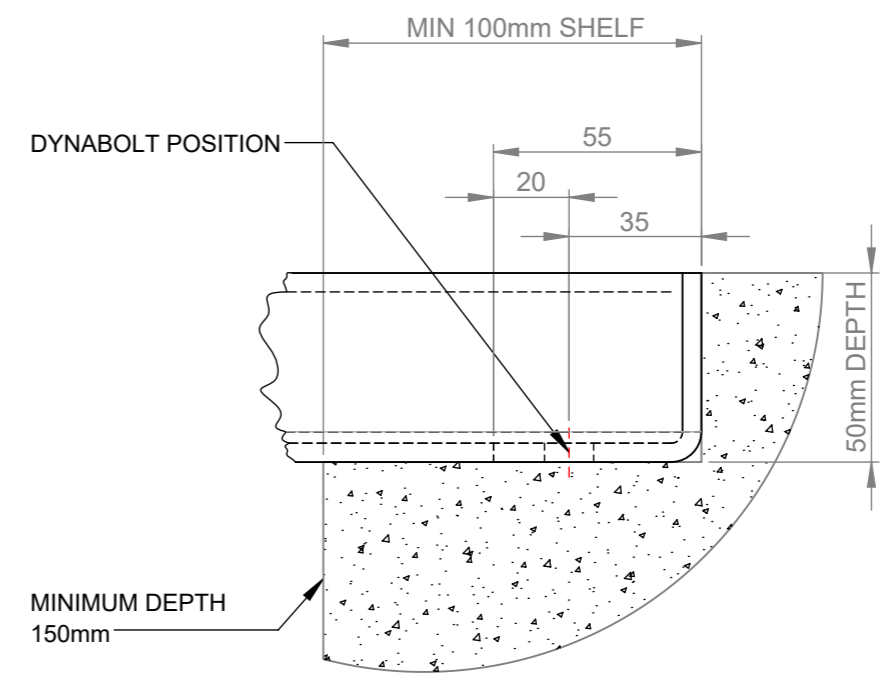


SECTION C-C



INSTALLATION DETAILS (RECOMMENDATIONS ONLY)
CONCRETE FOOTING, 25MPA:
 BOLT DOWN TO FOOTINGS WITH 8X M12X75MM DYNABOLTS OR SIMILAR



DETAIL D
 SCALE 1 : 2



Commercial Systems Australia Pty. Ltd.
 42 Orchard Street, Kilsyth South, VIC
 phone: (03) 9723 4111
 fax: (03) 9723 3494
 email: design@commercialsystems.com.au

Model Code: TG1083
 Model Description: CLASS A STANDARD SIZES

Drawing: CS58671

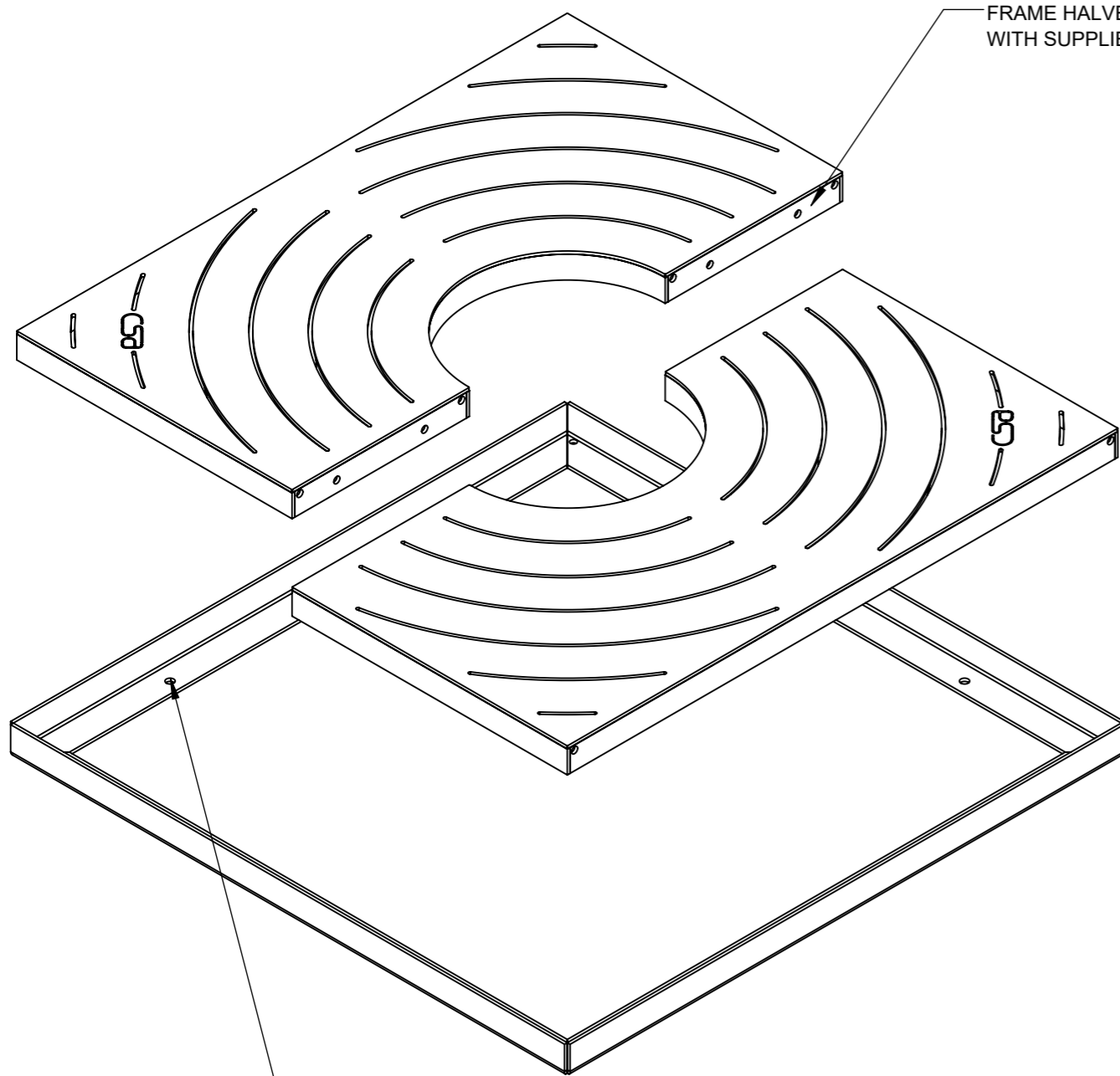
Sheet Number: 0
 Sheet Description: Install

Drawn By: GS
 Date Drawn: 23/05/2019
 Revision Number: 0
 Revision Details: -
 SCALE 1:10

ALL DIMENSIONS IN MILLIMETERS
 UNLESS OTHERWISE STATED
 ALL PARTS CENTRED UNLESS SPECIFIED

TOLERANCES

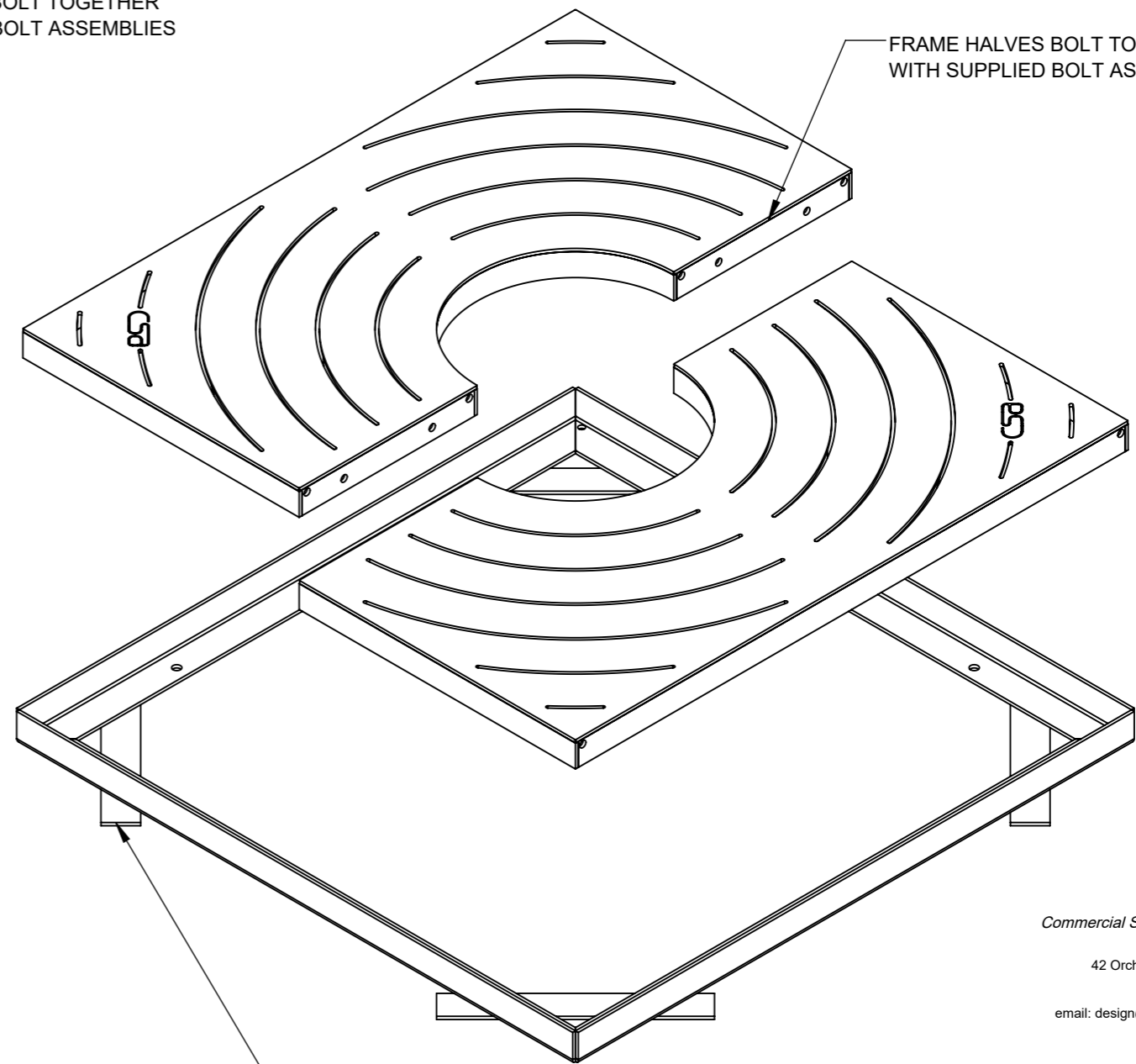
X	+/- 1mm
X.X	+/- 0.5mm
X.XX	+/- 0.05mm



13mm HOLES IN FRAME FOR M12 BOLT DOWN FIXING
FIXING BOLTS NOT SUPPLIED

EXPLODED VIEW
BOLT DOWN (1000 x 1000mm SHOWN)

FRAME HALVES BOLT TOGETHER
WITH SUPPLIED BOLT ASSEMBLIES



EXTENDED LEG / CAST IN FRAME TABS TO
ANCHOR INTO CONCRETE WHILE POURING.
BOLT HOLES NOT REQUIRED.

EXPLODED VIEW
EXTENDED LEG / CAST IN (1000 x 1000mm SHOWN)

FRAME HALVES BOLT TOGETHER
WITH SUPPLIED BOLT ASSEMBLIES



Commercial Systems Australia Pty. Ltd.

42 Orchard Street, Kilsyth South, VIC
phone: (03) 9723 4111
fax: (03) 9723 3494
email: design@commercialsystems.com.au

Model Code: TG1083
Model Description: CLASS A STANDARD SIZES

Drawing: CS58671

Sheet Number: 0
Sheet Description: Assembly & Installation

Drawn By: GS
Date Drawn: 23/05/2019
Revision Number: 0
Revision Details: -
SCALE 1:8

ALL DIMENSIONS IN MILLIMETERS
UNLESS OTHERWISE STATED
ALL PARTS CENTRED UNLESS SPECIFIED

TOLERANCES
X +/- 1mm
X.X +/- 0.5mm
X.XX +/- 0.05mm