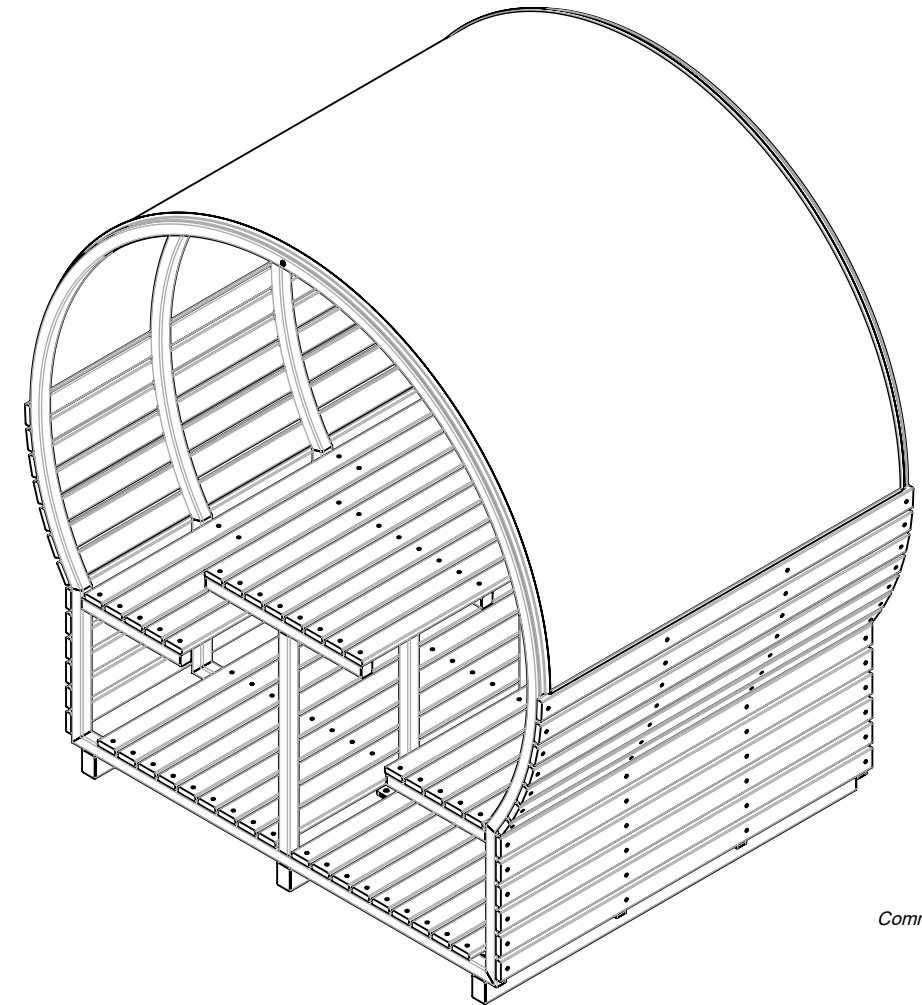


SECTION C-C

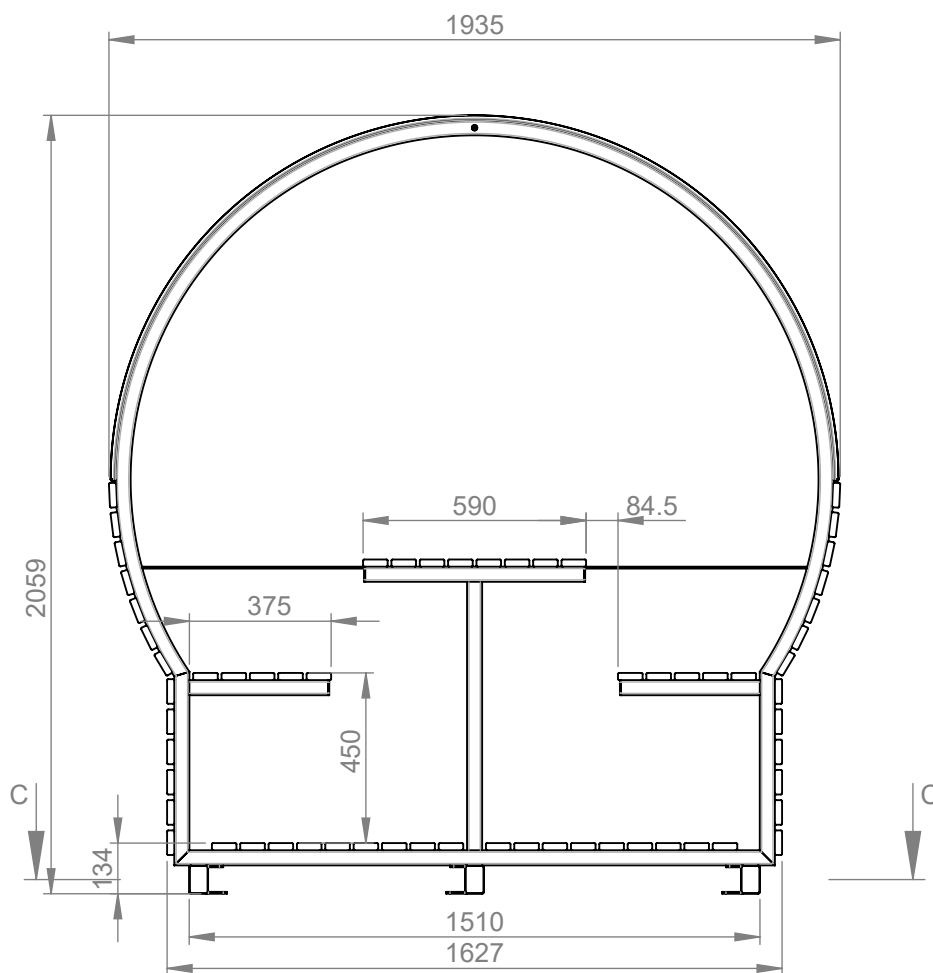
**INSTALLATION DETAILS (MIN RECOMMENDATIONS ONLY)**

**CONCRETE FOOTING, 25MPA:**

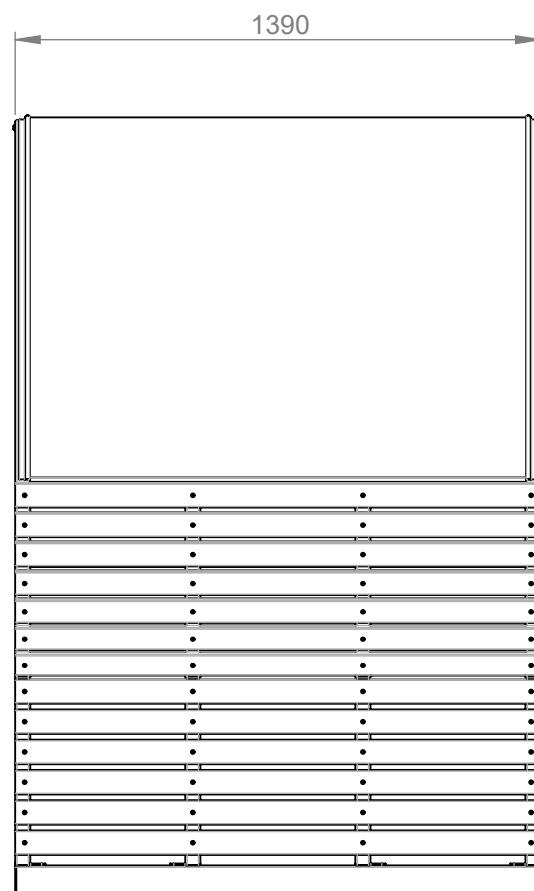
- 1 QTY CONCRETE SLAB MIN 1700 X 1400 X 100mm WITH REINFORCEMENT
- BOLT DOWN TO FOOTINGS WITH 6X 12mm X 75mm DYNABOLTS OR M12 CHEM ANCHORS



ISOMETRIC VIEW



FRONT VIEW



SIDE VIEW



Commercial Systems Australia Pty. Ltd.

42 Orchard Street, Kilsyth South, VIC  
 phone: (03) 9723 4111  
 fax: (03) 9723 3494  
 email: design@commercialsystems.com.au

Model Code: PS4030

Model Description: Wayfarer Pod Setting. 1390mm

**Drawing: CS7206**

Sheet Number: 12

Sheet Description: Install

Drawn By: GS

Date Drawn: 28/09/2023

Revision Number: -

Revision Details:

SCALE 1:20

ALL DIMENSIONS IN MILLIMETERS  
 UNLESS OTHERWISE STATED  
 ALL PARTS CENTRED UNLESS SPECIFIED

**TOLERANCES**

X	+/- 1mm
X.X	+/- 0.5mm
X.XX	+/- 0.05mm