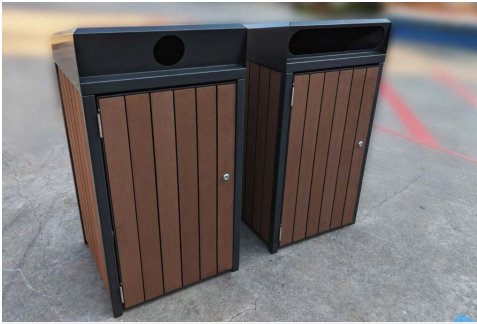




Commercial Systems Australia Pty. Ltd.

LR6220: 120L Timber Bin Enclosure 2018



DIMENSIONS

Width: 640mm | Depth: 640mm | Height: 1000mm (Body dimensions)

This bin enclosure fits a standard 120L [wheelie bin](#)

Lid options (304 Stainless steel):

- Recycling Low Pyramid (304SSRL)
- Recycling High Pyramid (304SSRH)
- Pyramid Top Lid (304SSPT)
- Curved Lid (304SSCL)
- Curved Recycling Lid (304SSCR)
- Flat with Canopy Lid (304SSFC)
- Flat Lid, (304SSF)
- Pyramid Front Entry Lid (304SSPF)
- Tapered Front Entry Lid (304SSTF)
- Tapered Front Entry Recycling Lid (304SSTR)

Lid options (Mild steel)

- Tapered Front Entry Lid (MSTF)
- Tapered Front Entry Recycling Lid (MSTR)

MATERIALS

Frame: Mild steel

Lid: 304 Stainless Steel | Mild steel

Battens: Australian Hardwood Timbers (Class 1) or Walnut Enviroslat Battens

FINISHES

Frame: Galvanised | Powdercoated

Timber Battens: Quantum Gold Oil

Lid: Powdercoated | Satin Polished

FIXINGS

Bolt down fixing

OTHER OPTIONS

Custom modifications available

Note. This model has superseded the LR6163 bin enclosure.

